

## 5. Chord Qualities

### The Five Chord Qualities

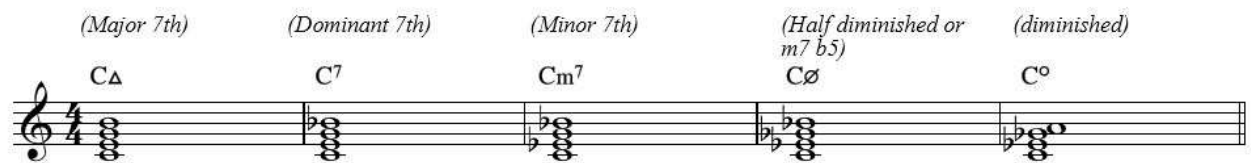
From the previous exercises (scale tone sevenths) we can see that there are four naturally occurring “chord qualities” within a major scale. These are:

- Major 7<sup>th</sup>
- Dominant 7<sup>th</sup>
- Minor 7<sup>th</sup>
- Half-diminished (often called “minor 7, b5)

In addition there is another chord quality which does not occur naturally:

- Diminished 7<sup>th</sup> - made up of 3 sets of minor 3rds (1,b3,b5, double b7 (or 6))

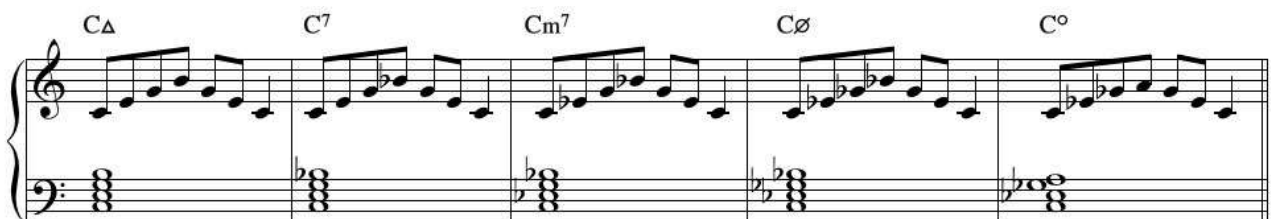
Fig 13.



Note! These 5 chord qualities can be build upon any degree of the scale

### Exercise

Practise the exercise below to become thoroughly familiar with each chord quality in both hands.



### Task:

Practise the five chord qualities in all twelve keys.